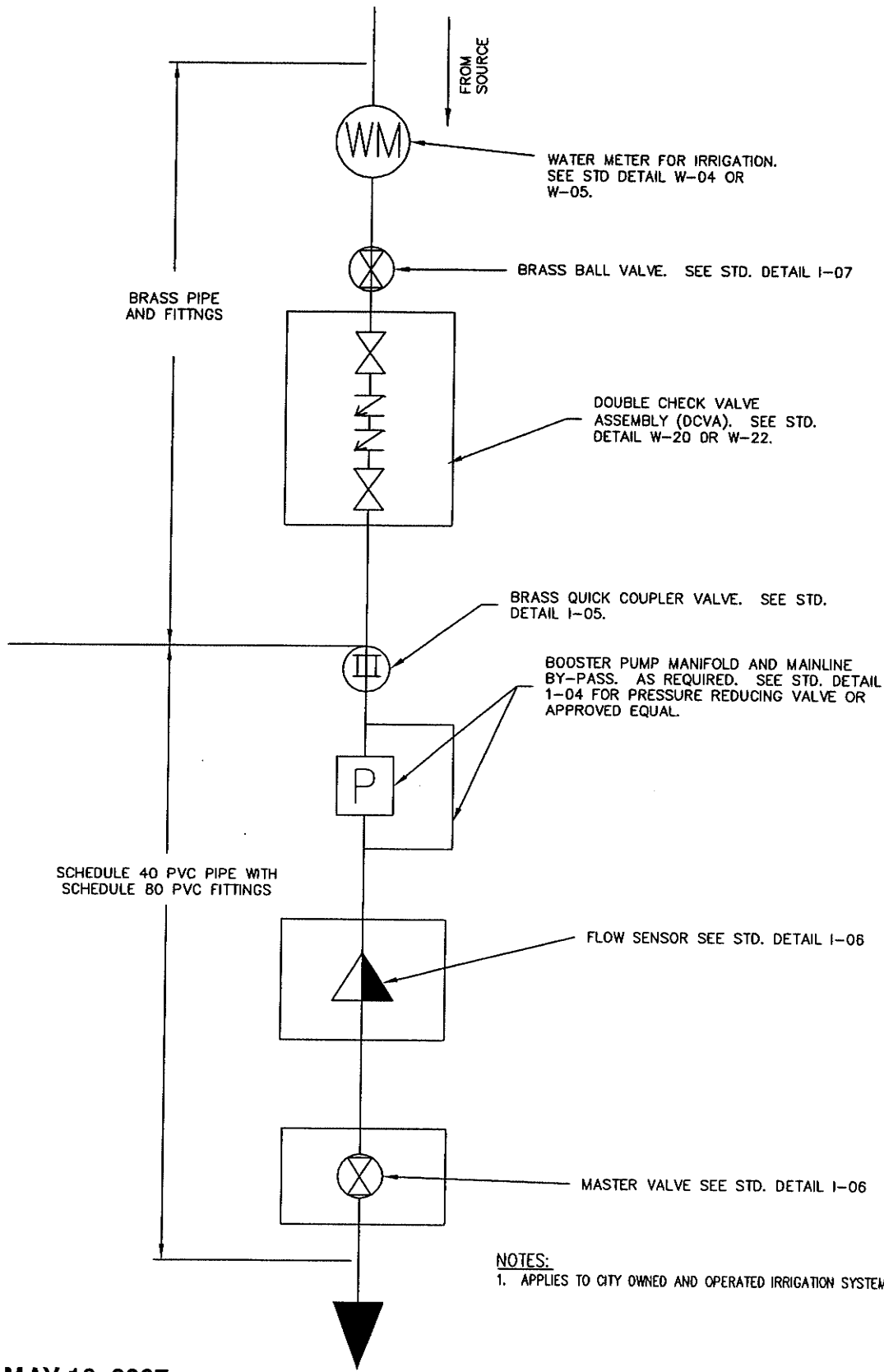


**CITY OF ISSAQUAH STANDARD  
DETAILS INDEX**

DESCRIPTION	DETAIL NO.
<b><u>II. IRRIGATION</u></b>	
IRRIGATION CONNECTION SCHEMATIC .....	I-01
SLEEVE TRENCHING .....	I-02
TRENCHING FOR MAIN & LATERAL LINES OUTSIDE PAVED AREAS .....	I-03
PRESSURE REDUCING VALVE ASSEMBLY THROUGH 2" .....	I-04
BRASS QUICK COUPLER VALVE (TURF OR BED AREAS) .....	I-05
MASTER VALVE AND FLOW SENSOR .....	I-06
BALL VALVE THROUGH 2" .....	I-07
AUTOMATIC CONTROL VALVE .....	I-08
POP UP SPRAY HEAD OR ROTOR HEAD .....	I-09
MULTI OUTLET EMITTER .....	I-10
POWER SUPPLY TRENCH .....	I-11
POWER DISCONNECT / CONTROLLER / CCU ENCLOSURE (TYPICAL SITE MASTER CONTROL LOCATION) .....	I-12

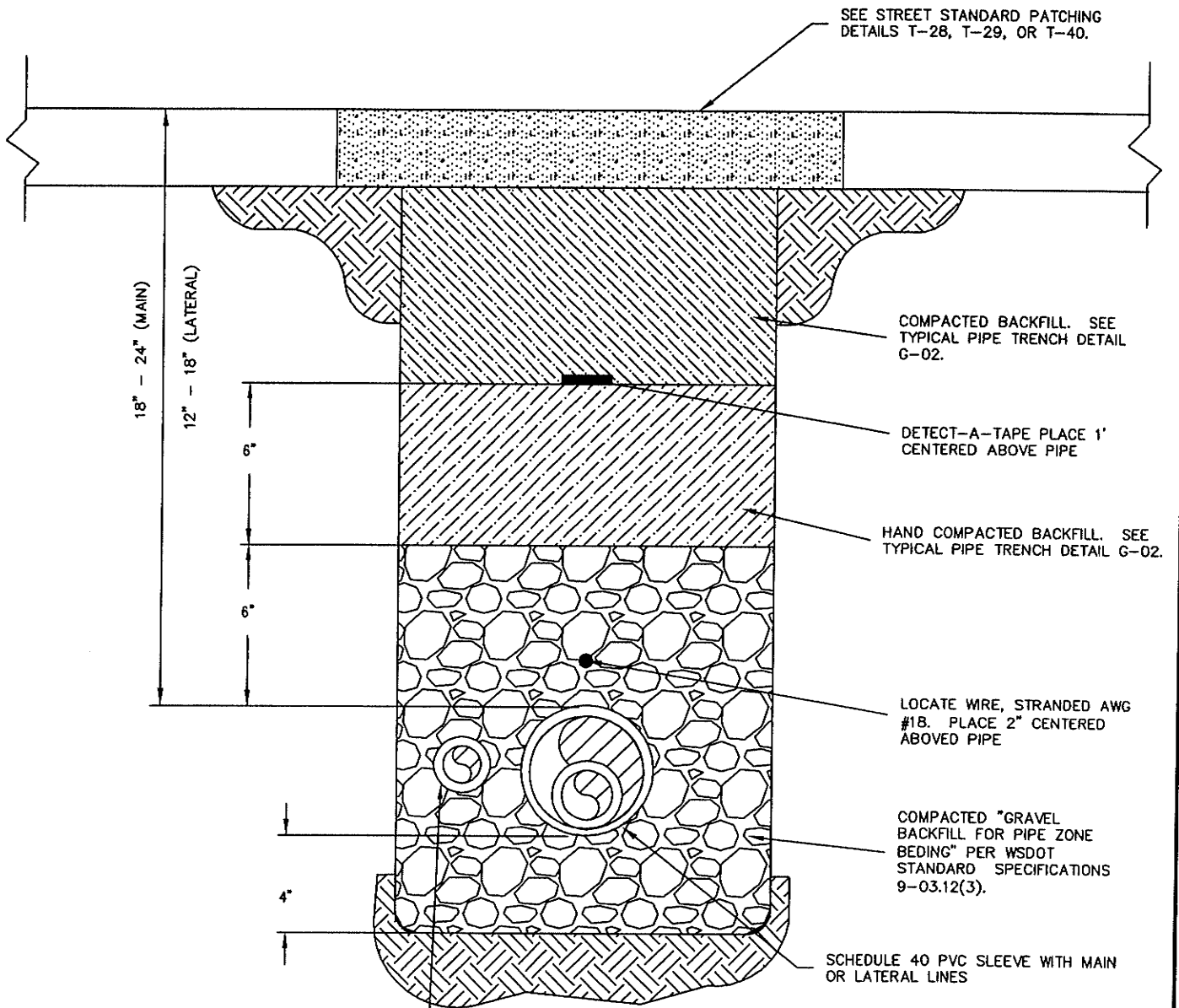


**NOTES:**  
 1. APPLIES TO CITY OWNED AND OPERATED IRRIGATION SYSTEMS ONLY.

REVISION: MAY 16, 2007

NO SCALE

<p>CITY OF ISSAQUAH PUBLIC WORKS DEPARTMENT</p>	<p>STEPHEN J. LINN PROFESSIONAL ENGINEER NO. 2010 EXPIRES</p>	<p>IRRIGATION CONNECTION SCHEMATIC</p>	<p>STANDARD DETAIL NO. I-01</p>
---	---	--	---



CONDUIT FOR WIRE. SIZE PER ELECTRICAL CODE.  
MINIMUM 2" SCHEDULE 40 PVC.

**NOTES:**

1. OUTER DIAMETER SLEEVE SIZE SHALL BE TWICE OUTER DIAMETER OF CARRIER PIPE.
2. SLEEVES REQUIRED UNDER ALL PAVED, SIDEWALK, DRIVEWAY, AND WALL AREAS.

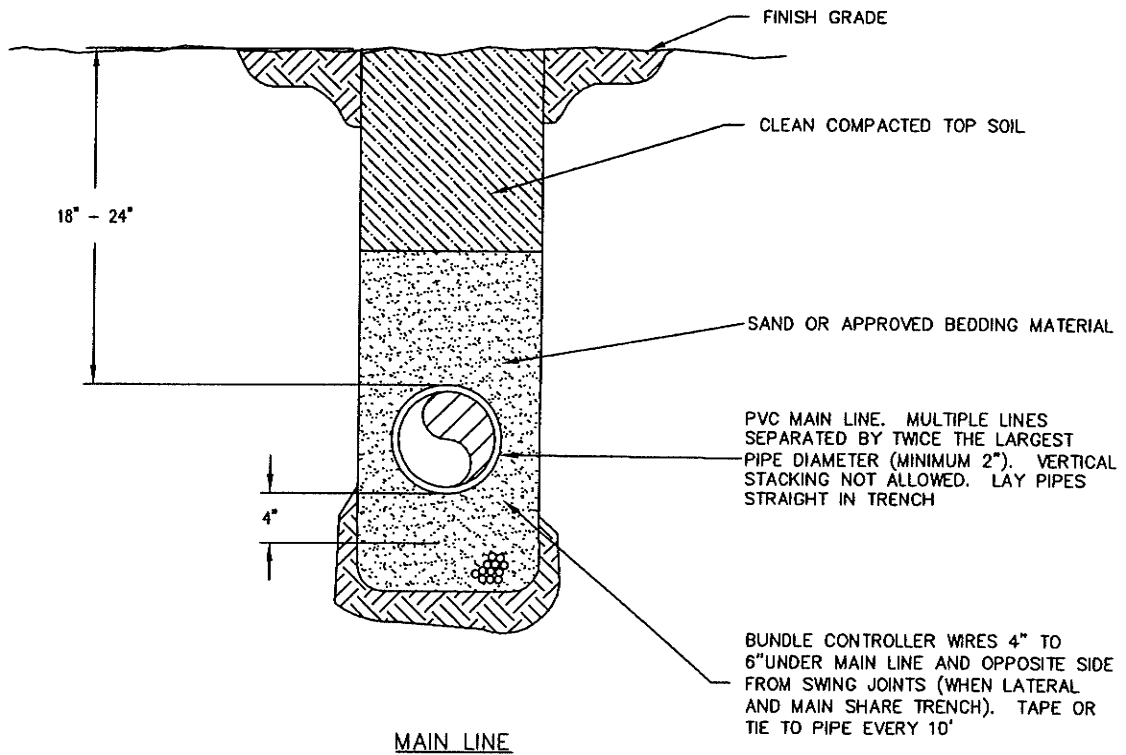
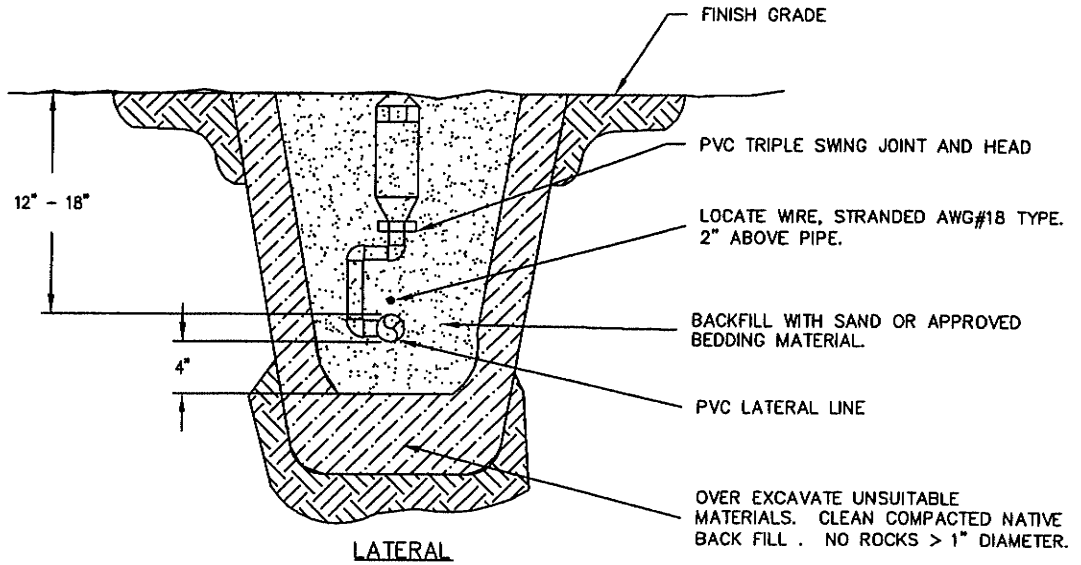
REVISION: MAY 16, 2007

NO SCALE



**SLEEVE TRENCHING**

**STANDARD  
DETAIL NO.  
I-02**



**NOTES:**

1. MAINLINE PIPE SHALL BE SCHEDULE 40 PVC JOINED WITH "IPS WELD-ON P-70" BRAND PRIMER AND "IPS WELD-ON 711" BRAND GLUE PER MANUFACTURERS RECOMMENDATIONS.
2. PIPE SHALL BE FREE OF DEBRIS PRIOR TO JOINING.
3. LATERAL PIPE SHALL BE PVC CLASS 200 JOINED WITH "IPS WELD-ON 721" BRAND GLUE PER MANUFACTURERS RECOMMENDATIONS.

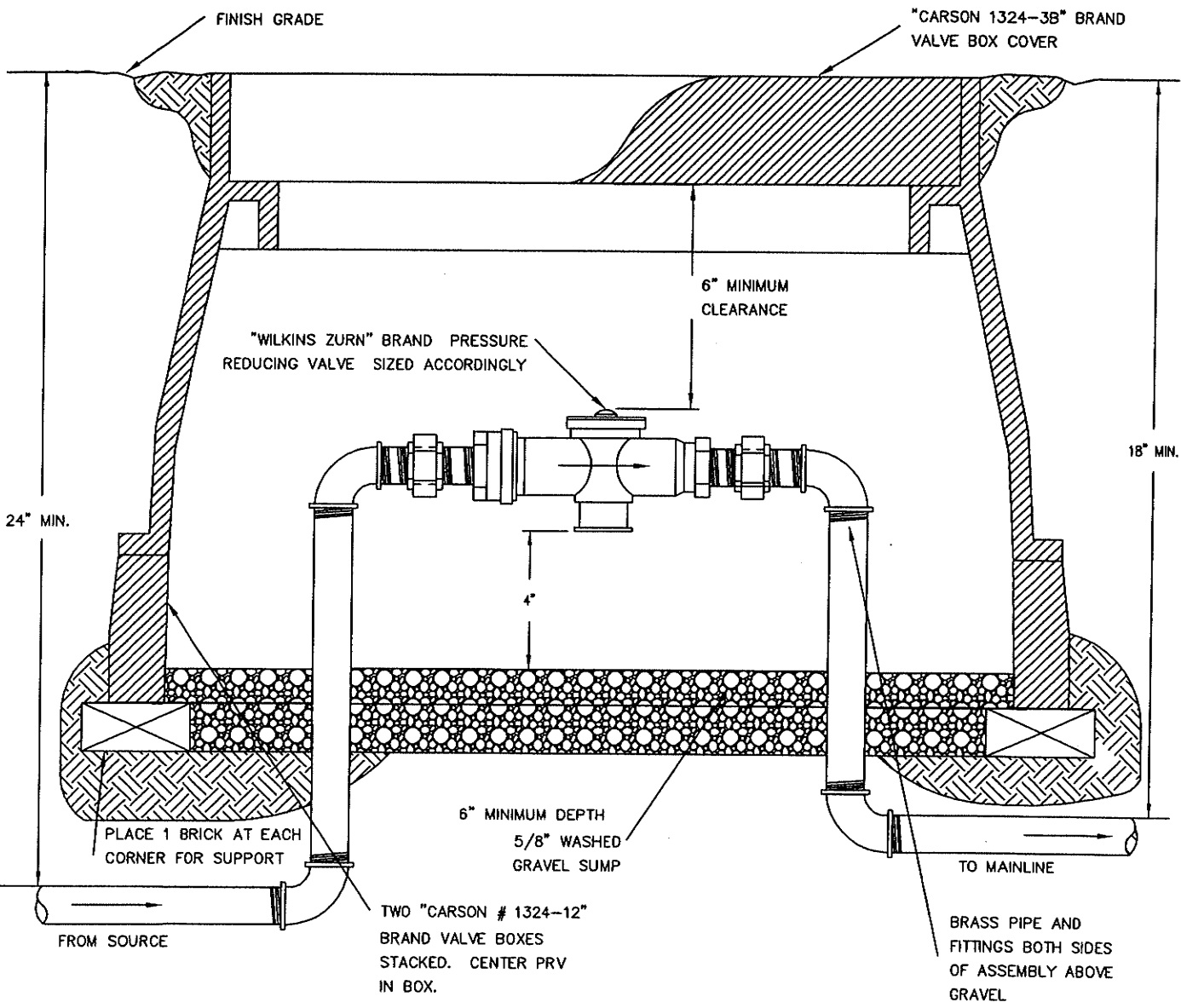
REVISION: MAY 16, 2007

NO SCALE



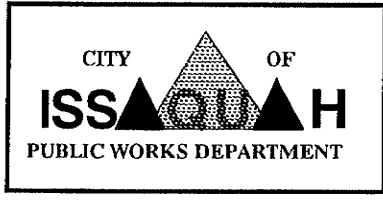
**TRENCHING FOR MAIN  
& LATERAL LINES  
OUTSIDE PAVED AREAS**

**STANDARD  
DETAIL NO.  
I-03**



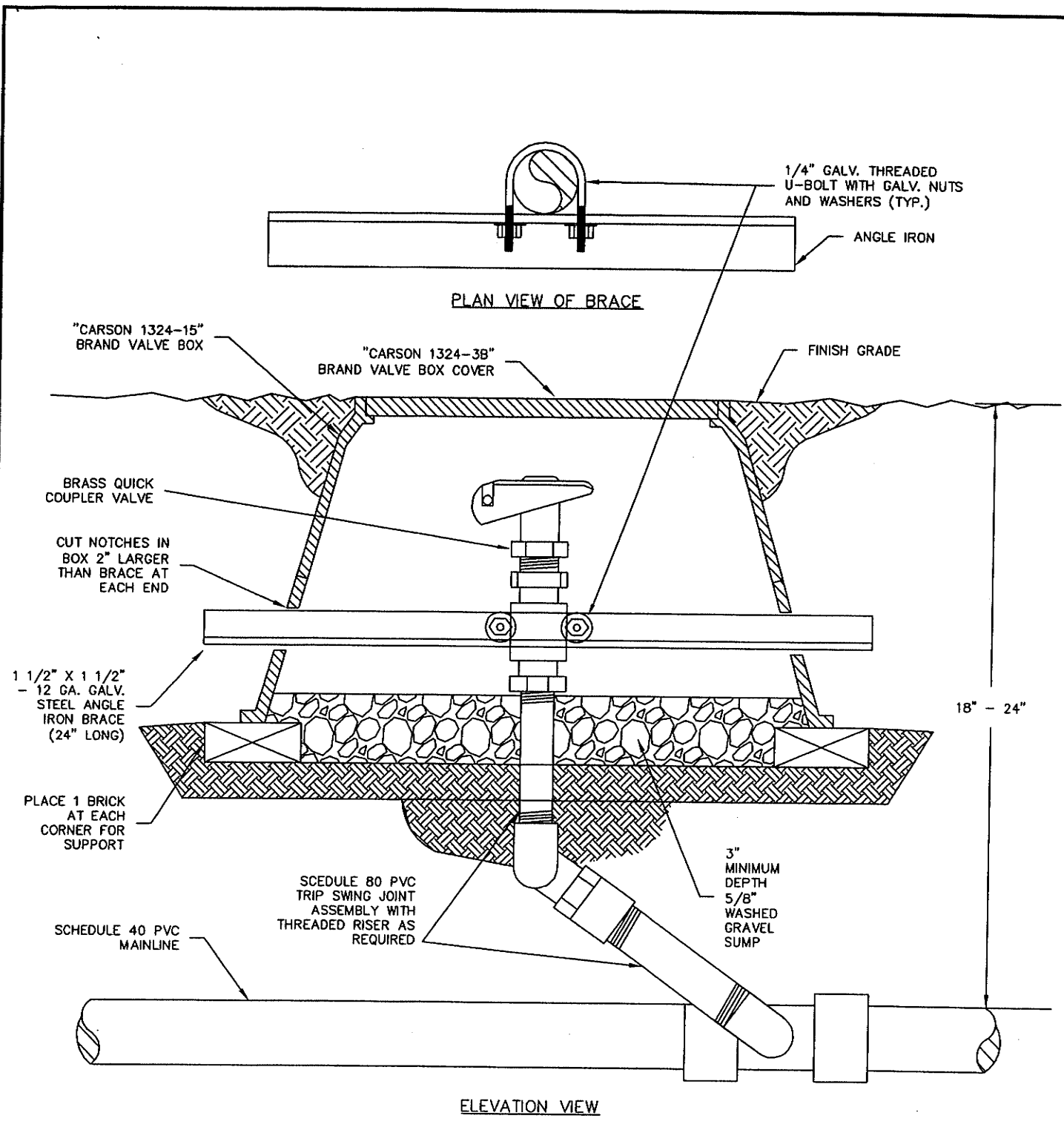
REVISION: MAY 16, 2007

NO SCALE



**PRESSURE REDUCING  
VALVE ASSEMBLY  
THROUGH 2"**

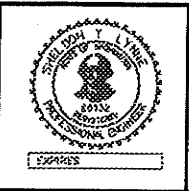
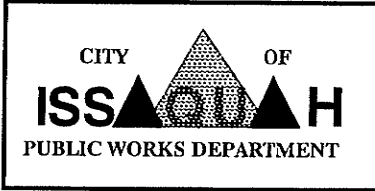
**STANDARD  
DETAIL NO.  
I-04**



**NOTES:**  
 1. USE TEFLON TAPE ON ALL THREADED FITTINGS

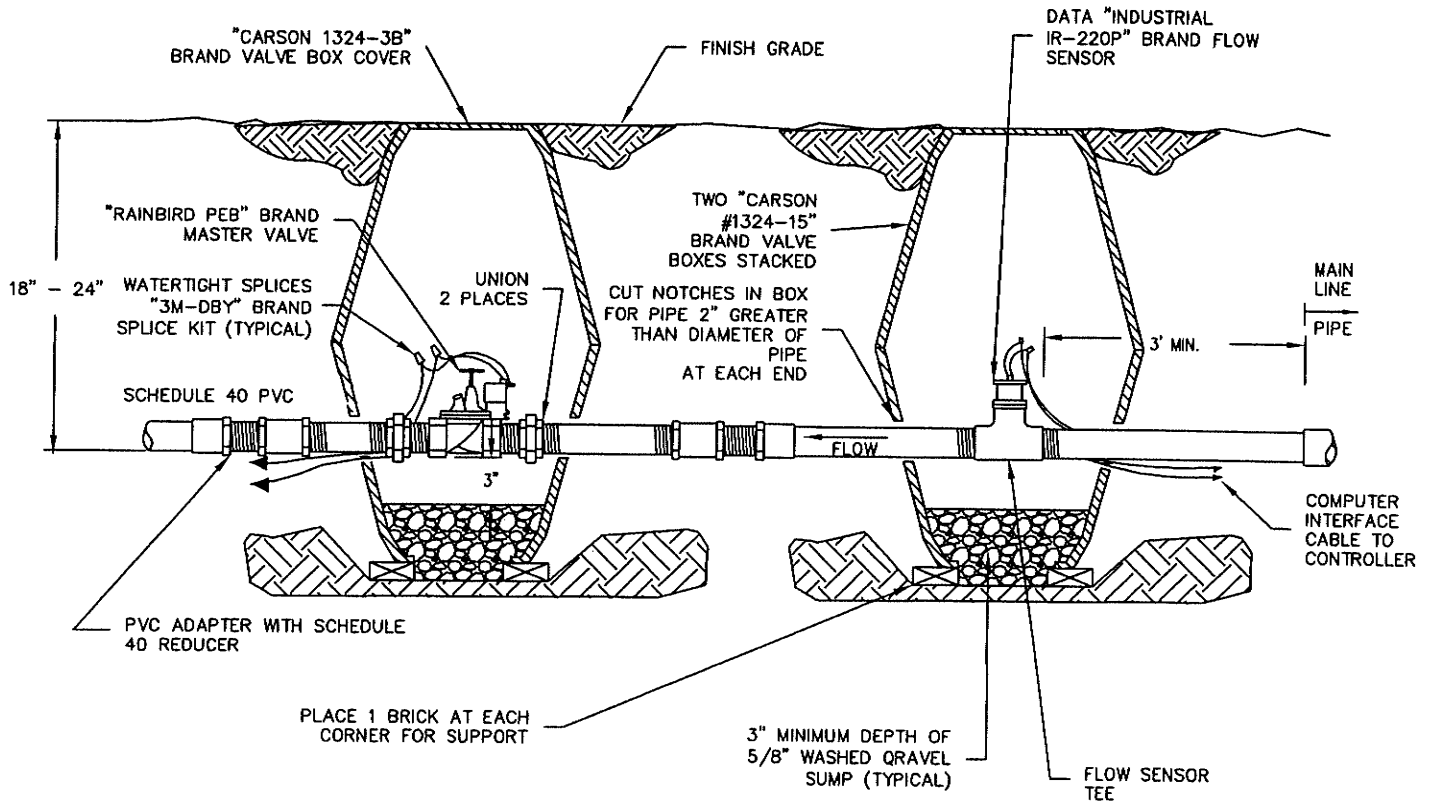
REVISION: MAY 16, 2007

NO SCALE



**BRASS QUICK COUPLER VALVE  
 (TURF OR BED AREAS)**

**STANDARD  
 DETAIL NO.  
 I-05**



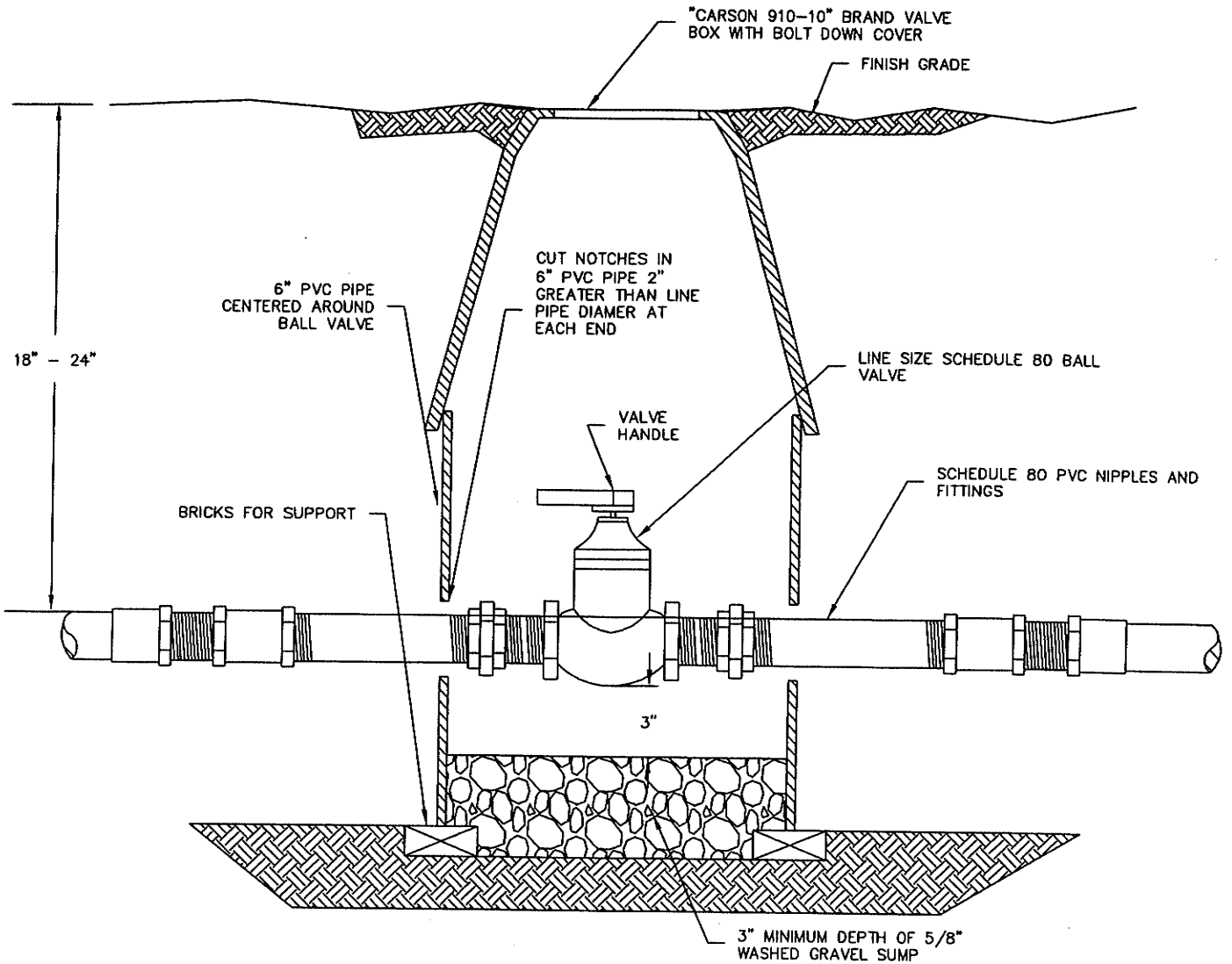
REVISION: MAY 16, 2007

NO SCALE



**MASTER VALVE AND  
FLOW SENSOR**

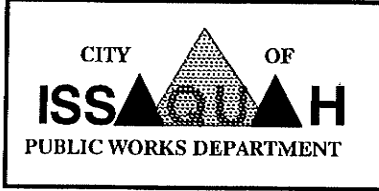
**STANDARD  
DETAIL NO.  
I-06**



**NOTE:**  
 1. USE TEFLON TAPE ON ALL THREADED FITTINGS.

REVISION: MAY 16, 2007

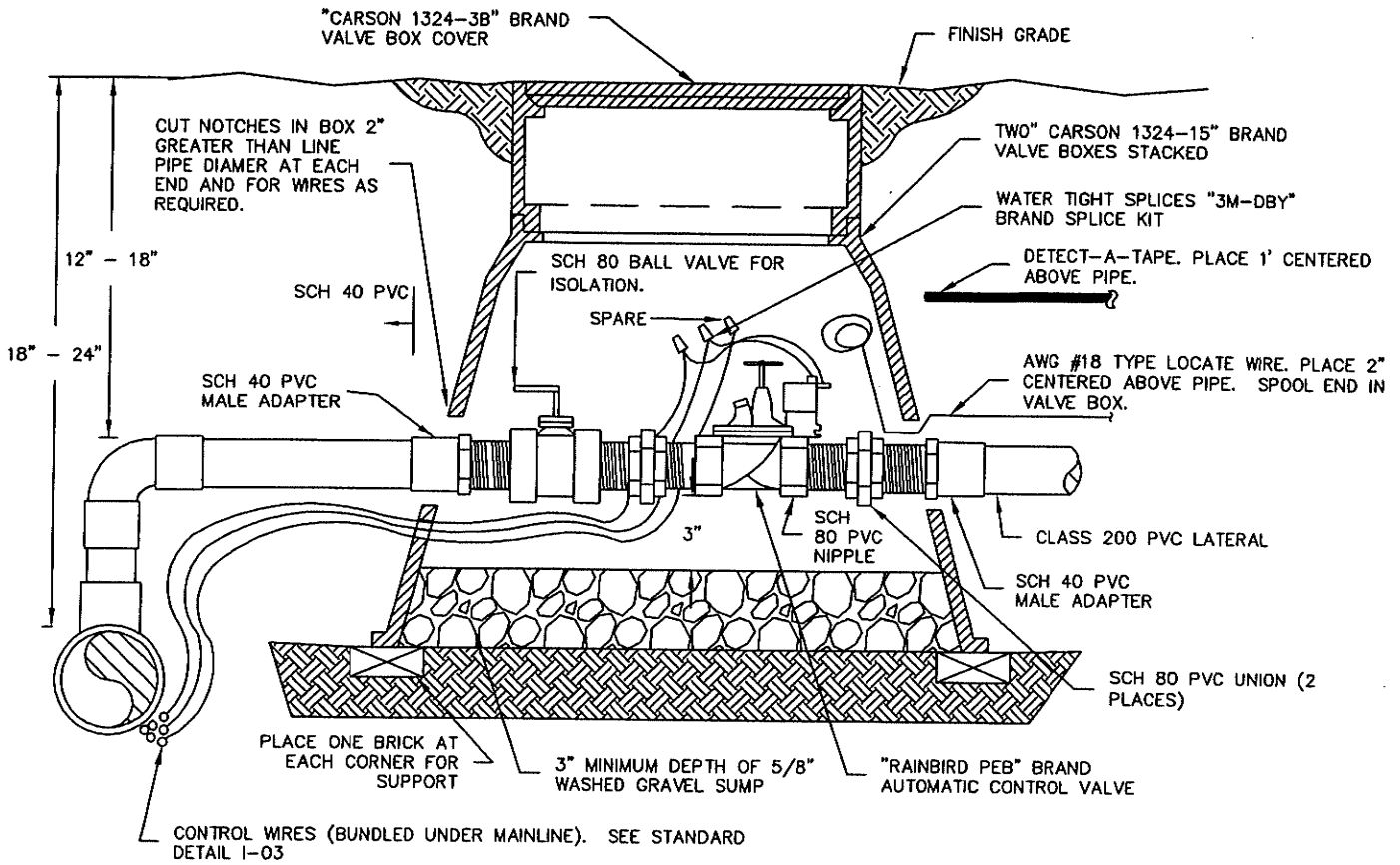
NO SCALE



**BALL VALVE  
 THROUGH 2"**

**STANDARD  
 DETAIL NO.  
 I-07**

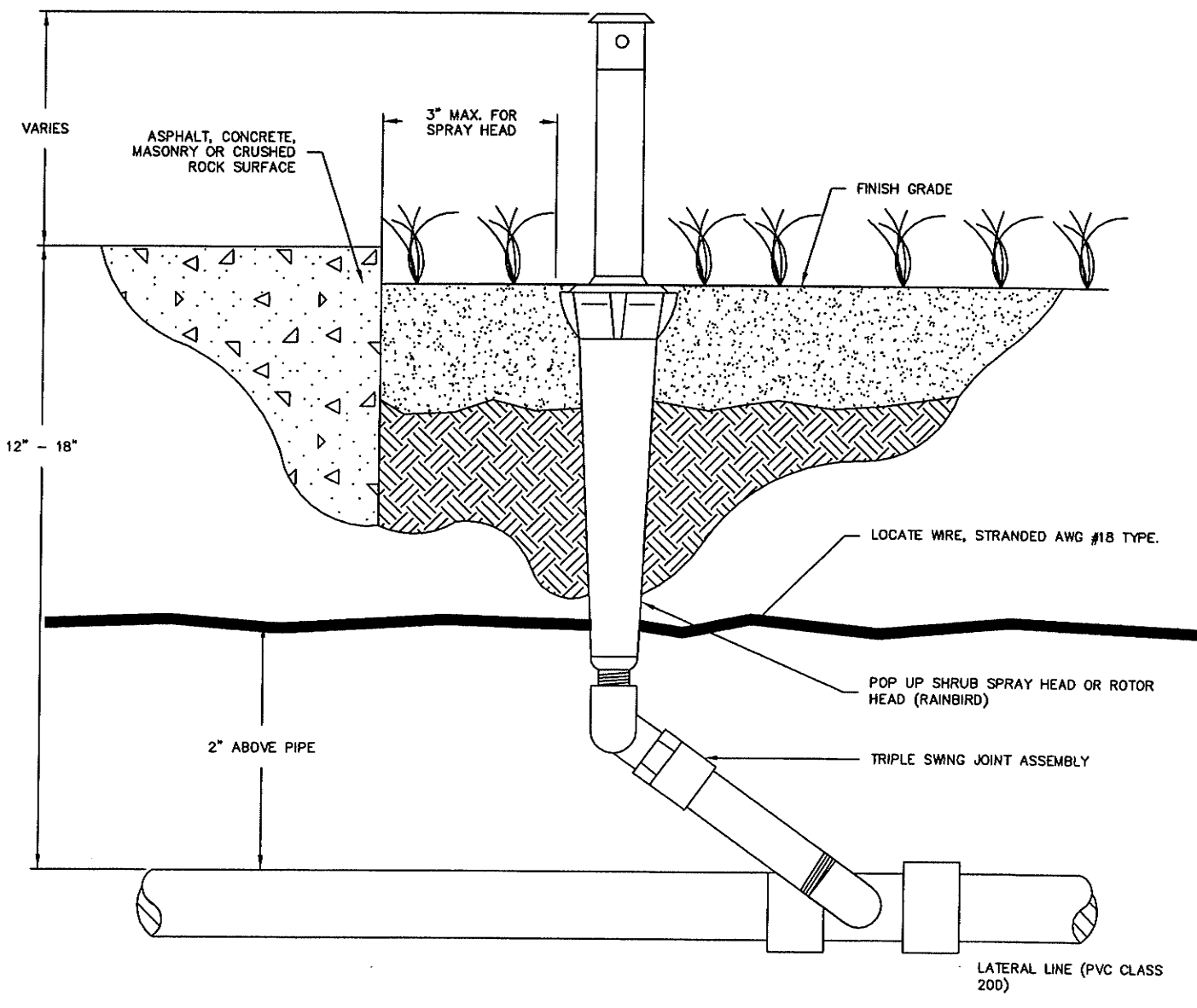




REVISION: MAY 16, 2007

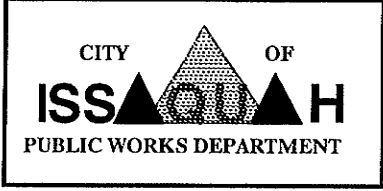
NO SCALE

<p>CITY OF ISSAQUAH PUBLIC WORKS DEPARTMENT</p>		<p><b>AUTOMATIC CONTROL VALVE</b></p>	<p><b>STANDARD DETAIL NO. 1-08</b></p>
---	--	---------------------------------------	--



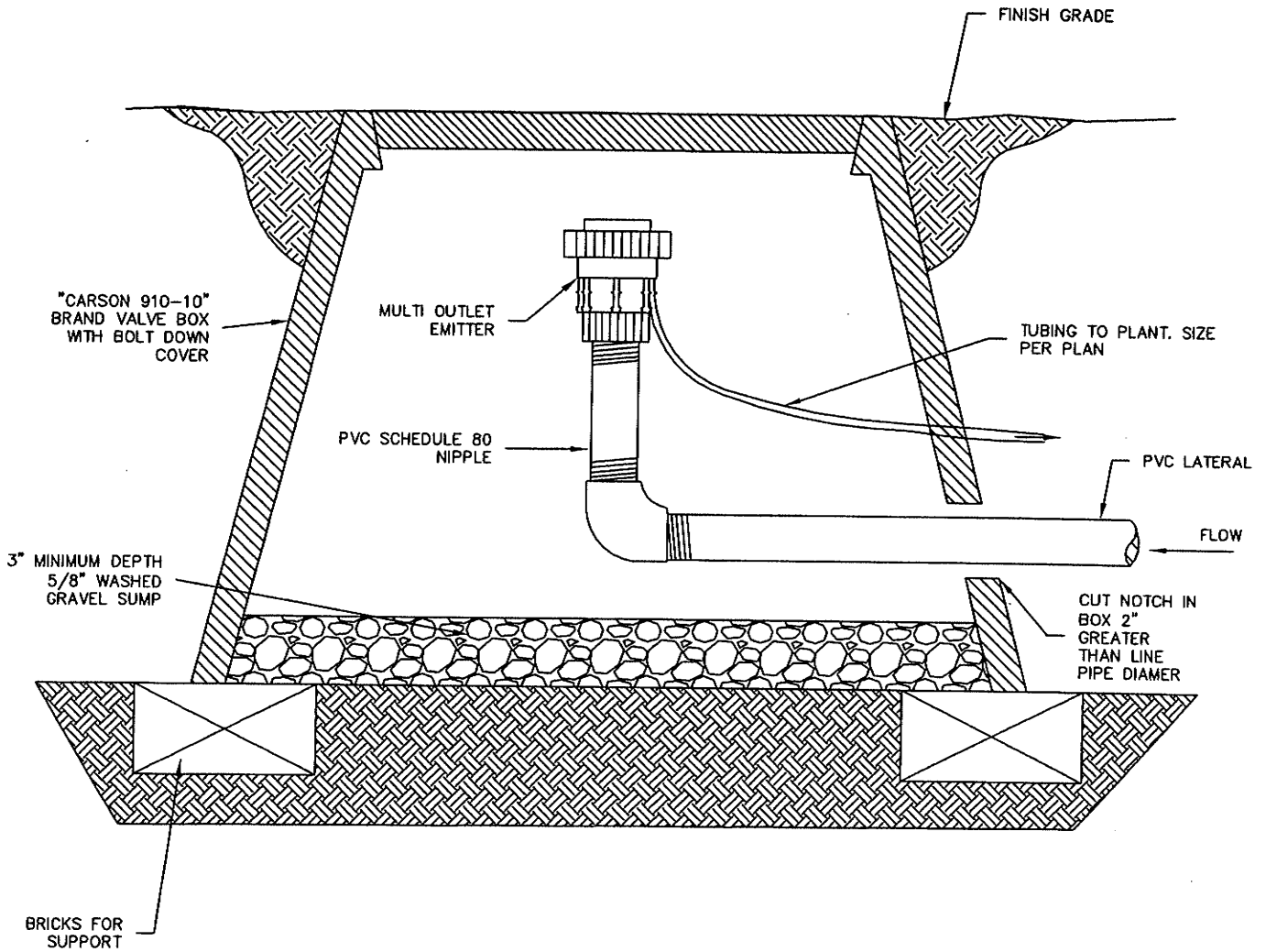
REVISION: MAY 16, 2007

NO SCALE



POP UP SPRAY  
OR ROTOR HEAD

STANDARD  
DETAIL NO.  
I-09



REVISION: MAY 16, 2007

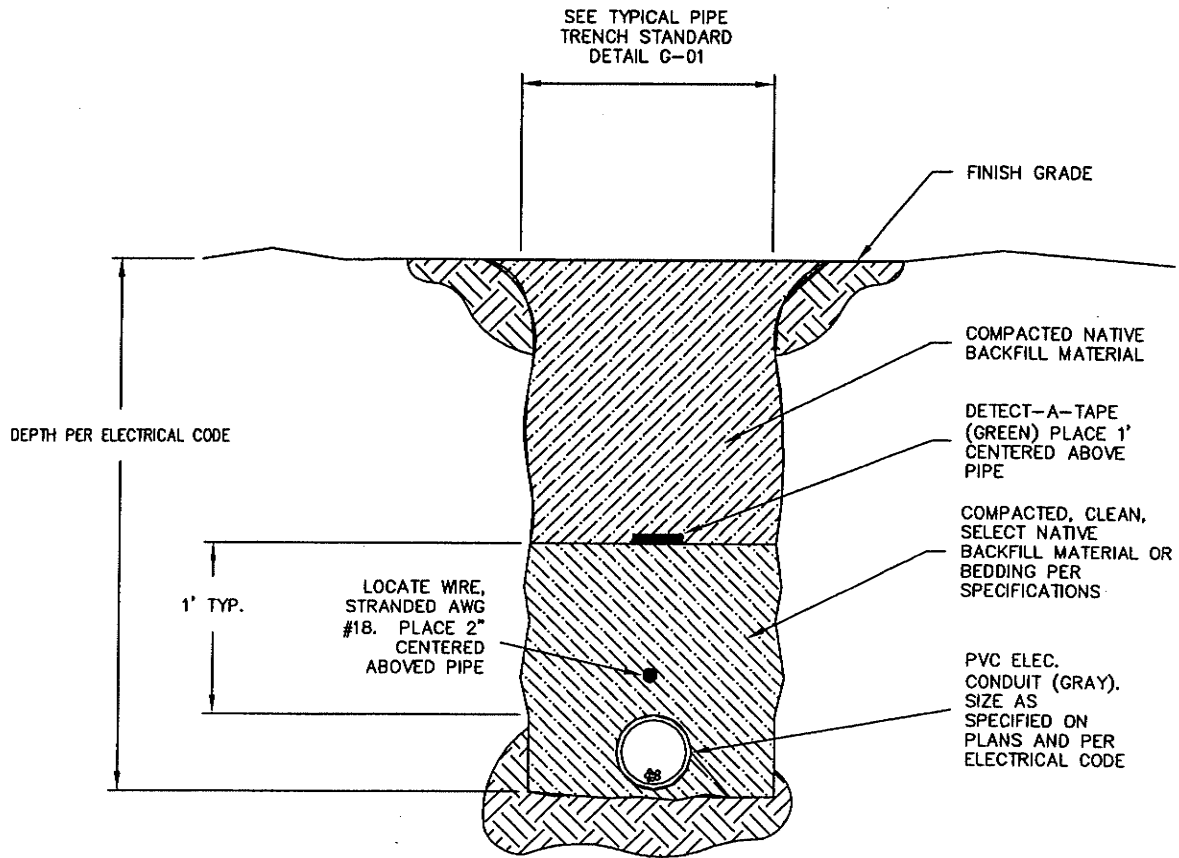
NO SCALE

CITY OF  
**ISSAQUAH**  
 PUBLIC WORKS DEPARTMENT



MULTI OUTLET EMITTER

STANDARD  
 DETAIL NO.  
 I-10



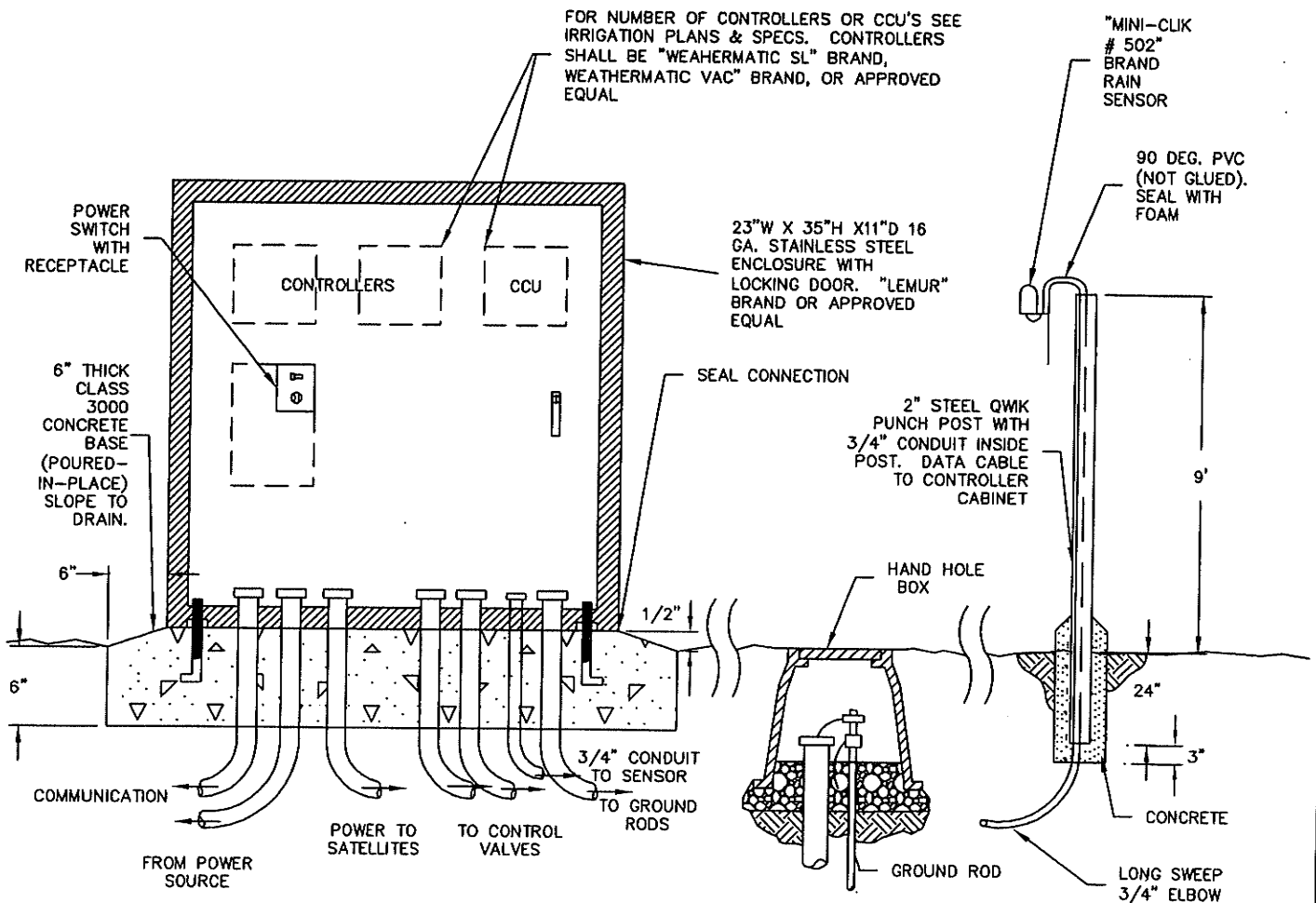
**NOTES:**

1. FOR BACKFILL REQUIREMENTS IN TRAVELED AREAS, SEE STANDARD DETAIL G-01.
2. FOR STREET PATCHING REQUIREMENTS SEE STANDARD DETAILS T-28, T-29, AND T-40.

REVISION: MAY 16, 2007

NO SCALE

<p>CITY OF ISSAQUAH PUBLIC WORKS DEPARTMENT</p>	<p>SEAL OF THE CITY OF ISSAQUAH 1912 ISSAQUAH, WASHINGTON</p>	<p>POWER SUPPLY TRENCH</p>	<p>STANDARD DETAIL NO. 1-11</p>
---	---	----------------------------	---



ELECTRICAL CONTROL ENCLOSURE

GROUND ROD AND BOX

RAIN SENSOR POST

NOTES:

1. USE TWISTED MULTI STRAND WIRE PER ELECTRICAL CODE.
2. ALL CONDUIT SIZED PER ELECTRICAL CODE.
3. ALL OPENINGS AROUND CONDUITS SHALL BE SEALED AND FILLED WITH GROUT IN ACCORDANCE WITH WSDT STANDARD SPECIFICATIONS

REVISION: MAY 16, 2007

NO SCALE