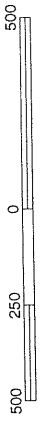




APPROXIMATE SCALE IN FEET



NATIONAL FLOOD INSURANCE PROGRAM

FIRM
FLOOD INSURANCE RATE MAP

**KING COUNTY,
WASHINGTON
AND INCORPORATED AREAS**

PANEL 691 OF 1725
(SEE MAP INDEX FOR PANELS NOT PRINTED)

CONTAINS:
COMMUNITY NUMBER, PANEL SUFFIX

KING COUNTY, UNINCORPORATED AREAS 530071 G
ISSAQUAH, CITY OF 530079 0691 G

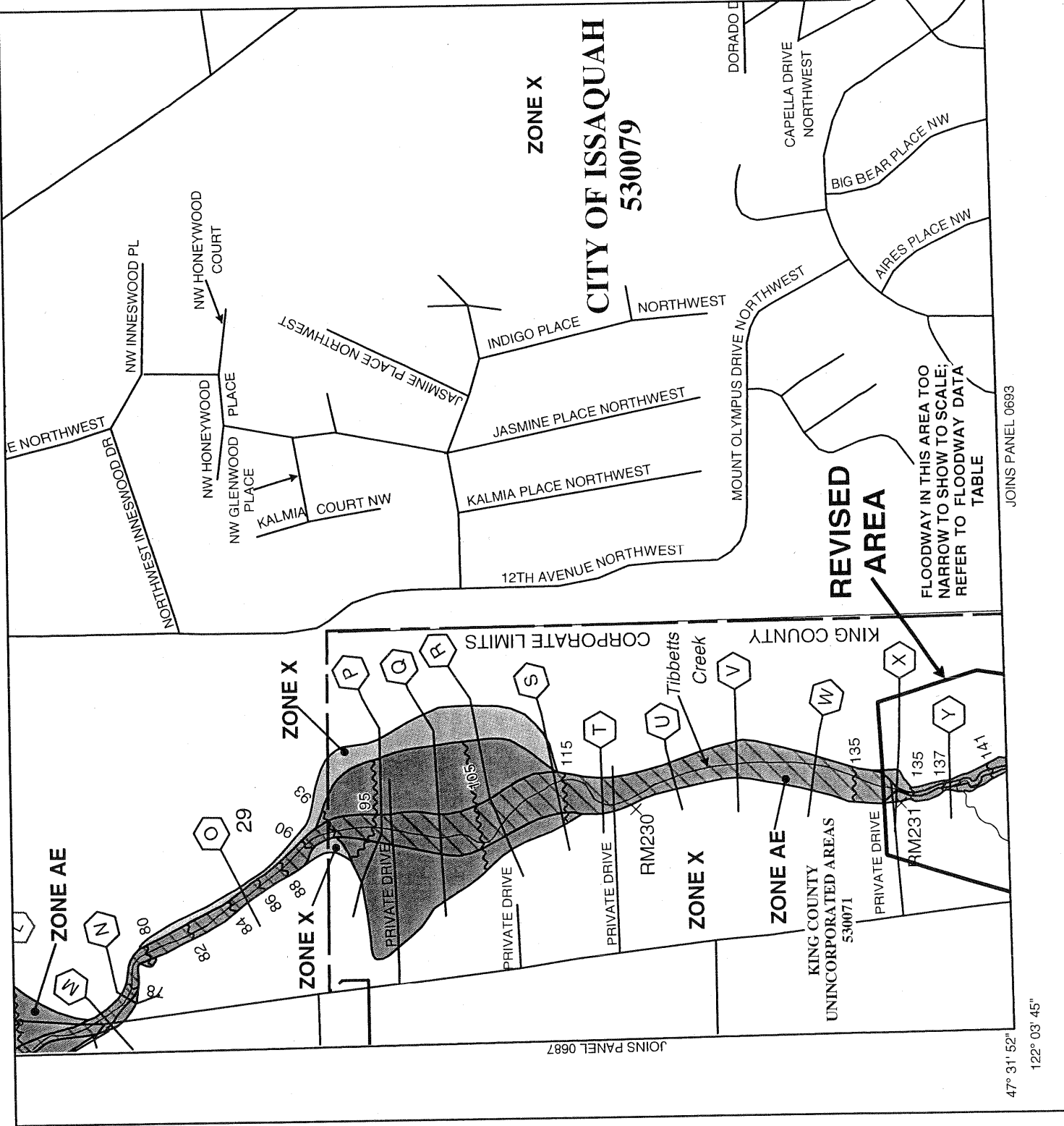
**REVISED TO
REFLECT LOWR
DATED JAN 22 2000**

MAP NUMBER
53033C0691 G

MAP REVISED:
MARCH 30, 1998



Federal Emergency Management Agency



JOINS PANEL 0693

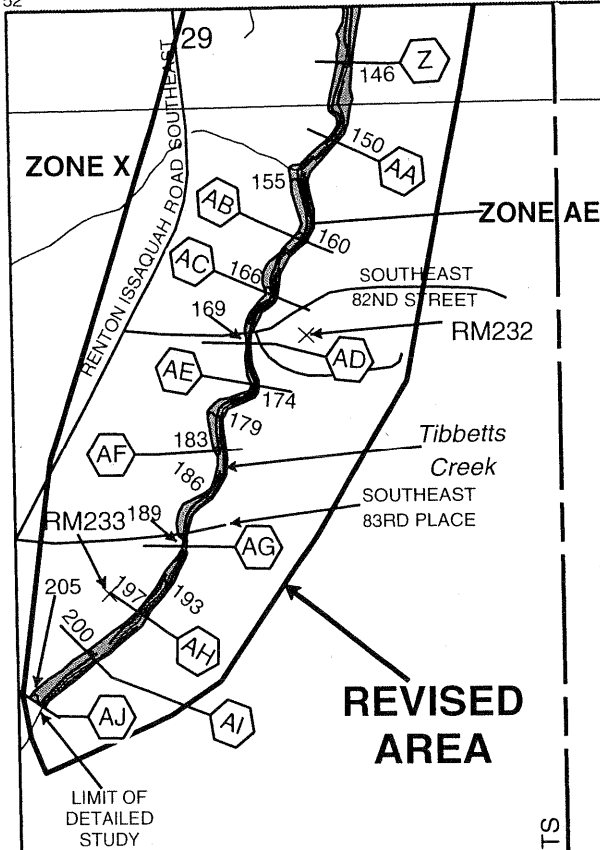
47° 31' 52"
122° 03' 45"

JOINS PANEL 0687

122° 03' 45"

JOINS PANEL 0691

47° 31' 52"



FLOODWAY IN THIS AREA TOO NARROW TO SHOW TO SCALE; REFER TO FLOODWAY DATA TABLE

32

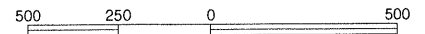
KING COUNTY UNINCORPORATED AREAS 530071

CITY OF ISSAQUAH 530079

ZONE X



APPROXIMATE SCALE IN FEET



NATIONAL FLOOD INSURANCE PROGRAM

FIRM FLOOD INSURANCE RATE MAP

KING COUNTY, WASHINGTON AND INCORPORATED AREAS

PANEL 693 OF 1725
(SEE MAP INDEX FOR PANELS NOT PRINTED)

CONTAINS:

COMMUNITY	NUMBER	PANEL SUFFIX
KING COUNTY UNINCORPORATED AREAS	530071 0693	F
ISSAQUAH CITY OF	530079 0693	F

REVISED TO REFLECT LOMR DATED JAN 22 2004

MAP NUMBER 53033C0693 F

MAP REVISED: MAY 16, 1995



Federal Emergency Management Agency

JOINS PANEL 0689

CORPORATE LIMITS